

Instron® 2840-030 Compression Platens incorporate LVDT mounting and are designed for reliable compressive high-cycle fatigue testing.

Principle of Operation

This compression fixture has been designed to easily provide the capability of compression testing. The platens are rigidly fixed and are non self-aligning. They have a high stiffness that resists off-centre loads; this retains the parallelism during specimen failure. The edge of the platen allows for the attachment of an LVDT, allowing you to measure the direct displacement between two equal sized platens during a compression test.

The specimen is placed on the lower platen whilst the upper platen is used to apply an opposing force on the specimen. This allows for high-cycle fatigue compression testing.

Features and Benefits

- 10 kN (2248 lbf) capacity
- Platen diameter of 100 mm (3.94 in)
- Wide temperature range of -70 to +350°C (-94 to +662°F)
- Compatible with 2601-071 LVDT Platen Displacement Fixture and appropriate LVDT. Select from 2601-091/2/3
- Laser-etched concentric rings on the anvil working surface provide an aid to specimen positioning
- Includes one set of pullrods to ensure zero separation can be achieved

Application Range

- Type of loading: Compression and rotation cyclic tests; suitable for high-cycle dynamic fatigue and static tests
- Specimen shapes: Flat and round
- Compatible with all new ElectroPuls™ E3000 and E10000 variants

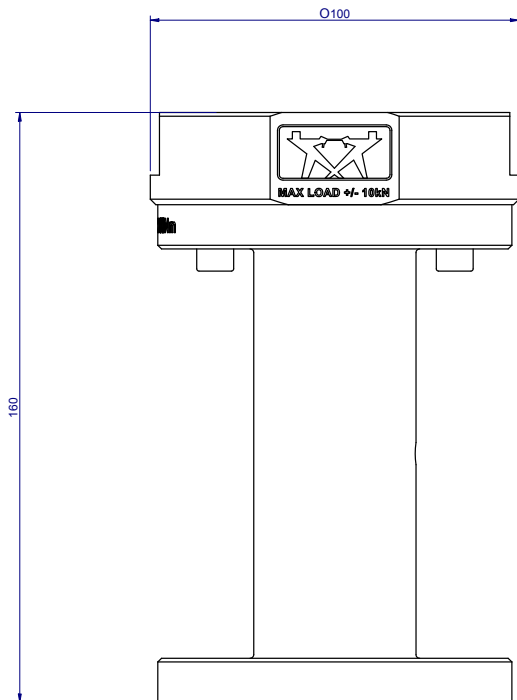
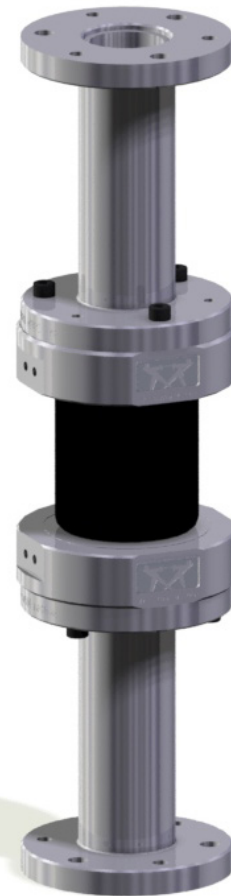


Specifications

Maximum Force Capacity	kN	10
	lbf	2248
Maximum Torque (Subject to Specimen Adhesion to Platen Surface)	Nm	25 on M6 Mount 100 on M8 Mount
	lbf.in	221 on M6 Mount 885 on M8 Mount
Upper & Lower Fitting		Flange Mount (To suit 3xM6 or 3x M8 on 75mm PCD)
LVDT Fitting		2 off M5
Platen Diameter	mm	100
	in	7.87

Optional Items for use with 2840-030

Catalog Number	Description
2601-071	LVDT Platen Displacement Fixture
2601-091	LVDT Deflection Sensor, range ± 0.5 mm (0.02 in)
2601-092	LVDT Deflection Sensor, range ± 2.5 mm (0.1 in)
2601-093	LVDT Deflection Sensor, range ± 15 mm (0.6 in)
3119-605	Environmental Chamber
3117-080	ElectroPuls™ Pullrod Kit



www.instron.com



Worldwide Headquarters
825 University Ave, Norwood, MA 02062-2643, USA
Tel: +1 800 564 8378 or +1 781 575 5000

European Headquarters
Coronation Road, High Wycombe, Bucks HP12 3SY, UK
Tel: +44 1494 464646

Instron Industrial Products
900 Liberty Street, Grove City, PA 16127, USA
Tel: +1 724 458 9610

Instron is a registered trademark of Illinois Tool Works Inc. (ITW). Other names, logos, icons and marks identifying Instron products and services referenced herein are trademarks of ITW and may not be used without the prior written permission of ITW. Other product and company names listed are trademarks or trade names of their respective companies. Copyright © 2015 Illinois Tool Works Inc. All rights reserved. All of the specifications shown in this document are subject to change without notice.