



Dynatup® Impulse™ Data Acquisition System Operators Course

Realise the potential of your operator personnel and investment in Instron® equipment through comprehensive 'hands-on' interactive instruction.

Duration: 2 days

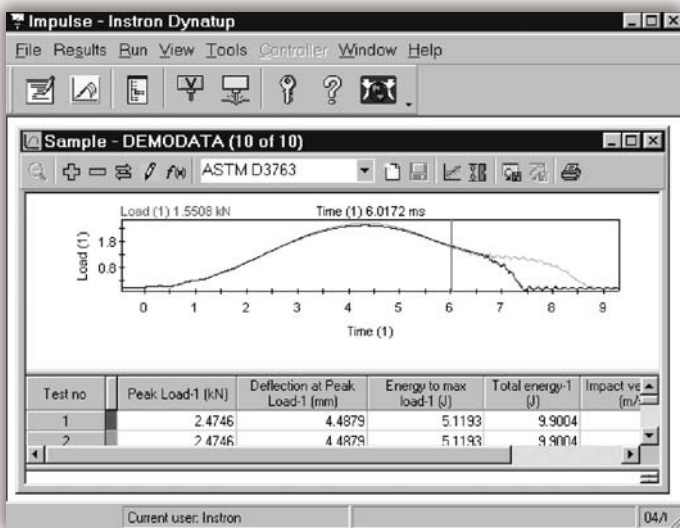
Who Should Attend?

- New Impulse for Windows® operators
- Test instrument operators
- Lab supervisors
- Product engineers, product inspectors
- Anyone interested in advancing their knowledge of the Impulse for Windows software

Course Objectives

After completing this course, students will be able to:

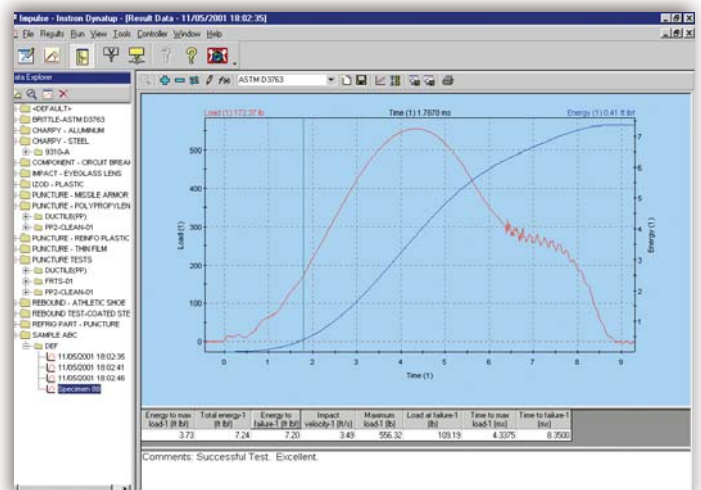
- Perform tests, generate graphs/reports
- Create and customize Impulse test methods
- Select appropriate report values for your applications
- Understand Impulse data explorer
- Work with samples and results
- Archive sample data for backup
- Export ASCII files for external software use
- Understand all Impulse dialog boxes
- Set yield and failure points
- Apply user points and plot calculation limits
- Set control limits for QC usage



Data display window in workspace.

Course Description

Complete computer training on Impulse for Windows software. Learn how to run tests with Impulse, generate reports and plots and to reanalyze your data. Create your own test methods for your specific application. Learn how to select and add calculations. The course also covers: exporting ASCII files for external databases, setting up yield/failure points and user specified result values.



Multi display options.

Course Outline

Day 1

9:00 a.m. - 4:45 p.m. (approximately)

- Introduction to Impulse™
- System overview, required hardware
- Using the tools menu
- Simulate a typical plastics impact test
- Generate a standard graph/report
- Modifying the standard graph/report
- Creating a new test method
- Entering impact settings parameters
- Entering channel 1 tup parameters
- Entering data collection parameters
- Setting control limits
- Exercise #1 - review

Day 2

9:00 a.m. - 4.45 p.m. (approximately)

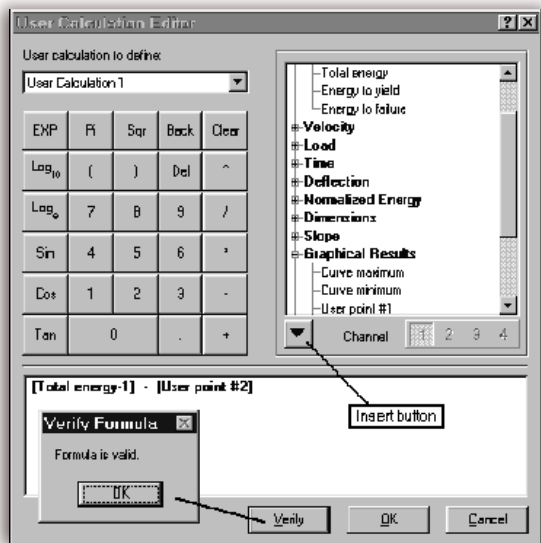
- Saving data as a sample
- Using the data explorer
- Using the result data window
- Modify test method from a result data window
- Export data in ASCII format
- Set user points and apply start/end plot limits
- Define yield and failure points
- Apply digital filtering to test data
- Calculations - review of all available choices
- Exercise #2 - selecting appropriate report values

Prerequisites:

- A fundamental operating knowledge of modern PC's including the basic use of MS Windows•
- A familiarity with materials testing concepts and principles
- Test instrument operation experience would be an advantage

Training Material:

- Comprehensive training manual included



User calculation editor.

To register for a course, please contact us at
Telephone: +44 1494 456815 ■ Fax: +44 1494 456667 ■ Email: Extra-Uk@instron.com

Corporate Headquarters

Instron Corporation
825 University Avenue
Norwood, MA 02062-2643 USA
Tel: +1 800 564 8378
+1 781 575 5000
Fax: +1 781 575 5725

European Headquarters

Instron Limited
Coronation Road
High Wycombe, Bucks
HP12 3SY United Kingdom
Tel: +44 1494 464646
Fax: +44 1494 456814

Instron S.A.

11 Parc Ariane
Guyancourt, Cedex 78284
Tel: +33 1 39 30 66 30
Fax: +33 1 30 64 67 11

Instron International Ltd

Via G Stephenson 94
20157 Milano, MI, Italy
Tel: +39 02 390 9101
Fax: +39 02 3900 5302

Instron Deutschland GmbH

Landwehrstrasse 65
D-64293 Darmstadt
Tel: +49 6151 3917 333
Fax: +49 6151 3917 503

Instron Limited Sucursal Spain- Portugal

C/ Argenters 2
Parque Tecnológico del Vallés
Cerdanyola, Barcelona 08290
Tel: +34 93 594 7561
Fax: +34 93 592 0760



Instron is a registered trademark of Instron Corporation.

Other names, logos, icons and marks identifying Instron products and services referenced herein are trademarks of Instron Corporation and may not be used without the prior written permission of Instron.

Other product and company names listed are trademarks or trade names of their respective companies.

Copyright © 2006 Instron Corporation. All rights reserved.

All of the specifications shown in this brochure are subject to change without notice.

www.instron.com