



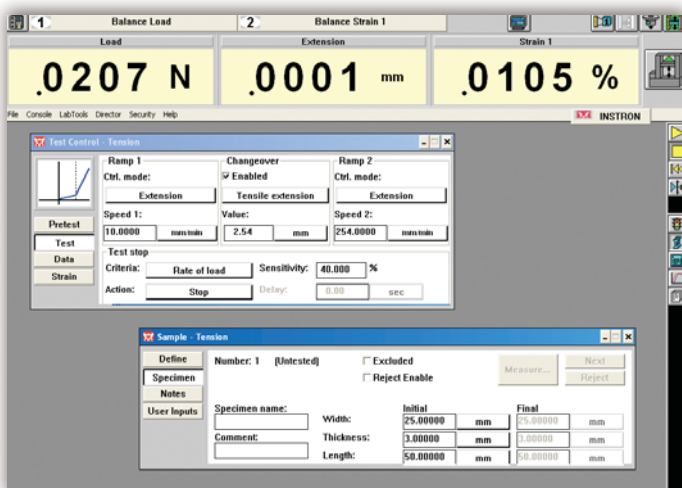
Merlin™ Software Operator's Course

Realise the potential of your operator personnel and investment in Instron® equipment through comprehensive 'hands-on' interactive instruction.

Duration: 2 days

Who Should Attend?

- New Merlin (5500) operators
- Test instrument operators
- Lab supervisors
- Product engineers, product inspectors
- Anyone interested in advancing their knowledge of the model 5500 operations



Test control set-up.

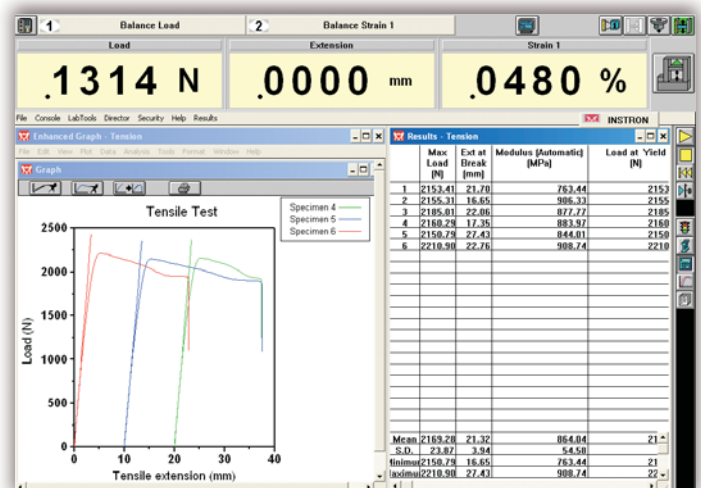
Course Description

Training on the 5500 hardware with major emphasis on the system operating software - Merlin. Students will learn safe machine operation, components of the testing load frame, and how to program test setups, how to run tests on the system and how to create their own test methods. They will learn how to save, recall and generate test data, test methods and test reports.

Course Objectives

After completing this course, students will be able to:

- Run tests, generate graphs and product test reports
- Create, save and retrieve test methods
- Configure screen display and control panel
- Setup test control parameters
- Enable limits, gains and break detector
- Set-up machine status, speed and specimen protect
- Electronically calibrate and balance transducers
- Enter specimen dimensions and sample identifications
- Set-up basic result table, statistics and calculations
- Recall system/service history log
- Set-up output to external recording devices
- Set-up digital I/O lines
- Print reports and graphics



Graphical and results display.

Course Outline

Day 1

9:00 a.m. - 4:45 p.m. (approximately)

- Introduction to 5500 load frame and control panel
- System start-up
- Setting up the console
 - Load frame console
 - Screen set-up
 - Setting up load cell and strain transducers
 - Setting up crosshead position console
 - Setting load, extension and strain limits
- Learning about LabTools
 - Setting up test control
 - Sample identification
 - Setting up results table
 - Setting up basic graph
 - Setting up basic report
- Run sample tests
- Adding calculations from calculation library
- Writing your own user calculations
- Running an application test method

Day 2

9:00 a.m. - 4:45 p.m. (approximately)

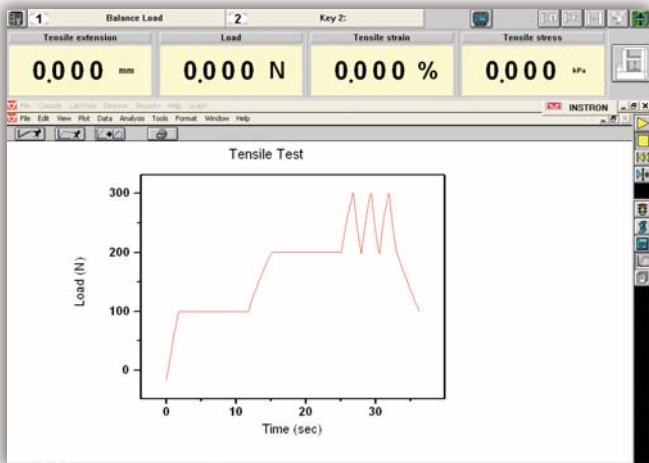
- Review of day 1
- Calculations overview
- Running test director
- Creating test directed methods
- Write your own test methods
- Understanding Merlin™ file structure
- Saving test methods and data
- Setting up a security system
- Load cell, grips and specimen installation
- Questions

Prerequisites:

- A fundamental operating knowledge of modern PC's including the basic use of MS Windows®
- A familiarity with materials testing concepts and principles
- Test instrument operation experience would be an advantage

Training Material:

- Comprehensive training manual included



Test profile display.

To register for a course, please contact us at
Telephone: +44 1494 456815 ■ Fax: +44 1494 456667 ■ Email: Extra-Uk@instron.com

Corporate Headquarters

Instron® Corporation
825 University Avenue
Norwood, MA 02062-2643 USA
Tel: +1 800 564 8378
+1 781 575 5000
Fax: +1 781 575 5725

European Headquarters

Instron Limited
Coronation Road
High Wycombe, Bucks
HP12 3SY United Kingdom
Tel: +44 1494 464646
Fax: +44 1494 456814

Instron S.A.

11 Parc Ariane
Guyancourt, Cedex 78284
Tel: +33 1 39 30 66 30
Fax: +33 1 30 64 67 11

Instron International Ltd

Via G Stephenson 94
20157 Milano, MI, Italy
Tel: +39 02 390 9101
Fax: +39 02 3900 5302

Instron Deutschland GmbH

Landwehrstrasse 65
D-64293 Darmstadt
Tel: +49 6151 3917 333
Fax: +49 6151 3917 503

Instron Limited Sucursal Spain- Portugal

C/ Argenters 2
Parque Tecnológico del Vallés
Cerdanyola, Barcelona 08290
Tel: +34 93 594 7561
Fax: +34 93 592 0760



Instron is a registered trademark of Instron Corporation.

Other names, logos, icons and marks identifying Instron products and services referenced herein are trademarks of Instron Corporation and may not be used without the prior written permission of Instron.

Other product and company names listed are trademarks or trade names of their respective companies.

Copyright © 2006 Instron Corporation. All rights reserved.

All of the specifications shown in this brochure are subject to change without notice.

www.instron.com

pod_MerlinOperatorsCourse_0106