

## 2717 SERIES TENSION GRIPS

Catalog Number 2717-029

The tension grips are designed to perform static tensile tests on shoulder-ended and threaded-end test specimens to various international standards.

The grips are designed with a double alignment arrangement at each end, which forms a universal joint of movement. This ensures the specimens are loaded in uniaxial tension, not requiring any adjustment during use.

A full range of interchangeable grip heads are available for use with specimens of different cross-sectional areas.

A safety guard is provided for the shoulder specimen grips to prevent specimens being ejected from the grips where stored energy is released on specimen breakage.

### PRINCIPLE OF OPERATION

Easy to install, the design allows for fast, efficient testing of threaded and shoulder specimens freely accessible from the front. The grips are self-aligning for uniaxial loading of the specimen.

### FEATURES

- Rated capacity: 100 kN (10,000 kg, 22,500 lb)
- Accepts a range of different cross-sectional areas of shoulder ended and threaded end specimens
- Conforms to ISO, ASTM, EN, DIN and many other standards
- Quick and easy to use
- Self alignment for uniaxial tension tests
- Safety guard for use with shoulder specimens
- Rugged design for minimum maintenance
- Temperature range: -70 °C to +350 °C (-94 °F to +662 °F)

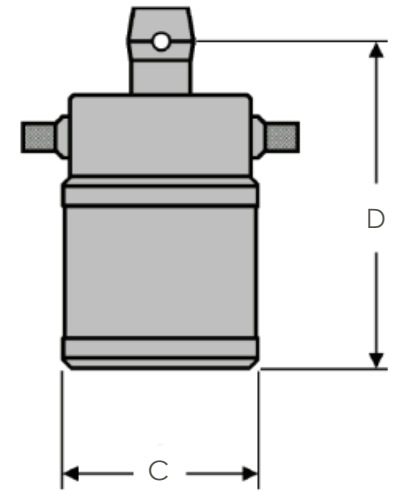
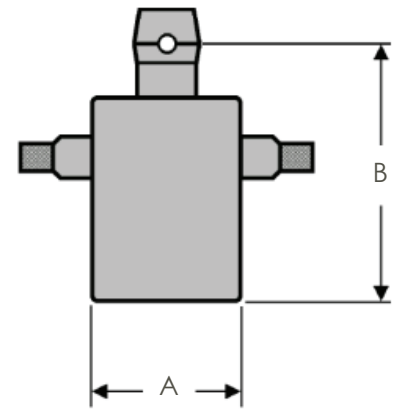
### APPLICATION RANGE

- Type of loading: Tensile static and tensile cyclic tests. Not suitable for high cycle fatigue tests.
- Specimen material: Steel, non-ferrous metals.
- Specimen shapes: Round specimen with shoulder or threaded heads.



## 2717-029 SPECIFICATIONS

Maximum Capacity	kN	100
	lbf	22,500
Mechanical Upper fitting	-	0.5 in clevis pin (Type Dm)
Mechanical Lower fitting	-	0.5 in clevis pin (Type Dm)
Threaded Specimens Grip Head Width (A)	mm	51
	in	2
Threaded Specimens Grip Head Effective Length (B)	mm	110
	in	4.3
Shoulder Specimens Grip Head Width (C)	mm	76
	in	3
Shoulder Specimens Grip Head Effective Length (D)	mm	152
	in	6
Weight, Single Grip Head	kg	0.6
	lb	1.4
Temperature Range	°C	-70 to +350
	°F	-94 to +662
Working Principal	-	Contour contact force transfer via shoulder or threaded ends



Grip dimensions for self-aligning tension

Notes: Self-aligning tension grips - scope of supply: 1 pair of grips

## GRIP HEADS FOR THREADED SPECIMEN ENDS

Catalog Number	Maximum Capacity			Specimen End
	kN	kg	lb	
2717-021	100	10,000	22,500	M8
2717-022	100	10,000	22,500	M10
2717-023	100	10,000	22,500	M12
2717-024	100	10,000	22,500	M18
2717-025	100	10,000	22,500	M20
2717-026	100	10,000	22,500	M24
2717-027	100	10,000	22,500	Blank

## GRIP HEADS FOR SHOULDER SPECIMEN ENDS

Catalog Number	Maximum Capacity			Specimen End Location Diameter	
	kN	kg	lb	mm	in
2717-031	100	10,000	22,500	6	0.2
2717-032	100	10,000	22,500	8	0.3
2717-033	100	10,000	22,500	10	0.4
2717-034	100	10,000	22,500	15	0.6

Notes:

- Grip heads - scope of supply: 1 pair of grips.
- The blank threaded grip head will accept a maximum thread size up to M30.

[www.instron.com](http://www.instron.com)

Worldwide Headquarters  
825 University Ave, Norwood, MA 02062-2643, USA  
Tel: +1 800 564 8378 or +1 781 575 5000

European Headquarters  
Coronation Road, High Wycombe, Bucks HP12 3SY, UK  
Tel: +44 1494 464646