

Instron's CT6 delivers the advantages of automation without the added complexity of a fully automated testing system. By integrating a collaborative robot (cobot) with a universal testing machine, the CT6 enables automated specimen loading and unloading for low- to mid-volume component testing.

When paired with Bluehill® Automation, testing workflows and cobot movements can be programmed through an intuitive user interface—familiar to anyone who uses Bluehill® Universal. As with a standard testing system, a variety of specimen trays and fixtures can be easily swapped to automate a complete range of tests based on laboratory needs.

The CT6 is an approachable, flexible automation solution designed to integrate seamlessly into existing lab environments—without requiring specialized automation expertise.

The CT6 is compatible with Instron's 6800 systems. It mounts easily to a new system or can be retrofitted onto an existing system in the field.

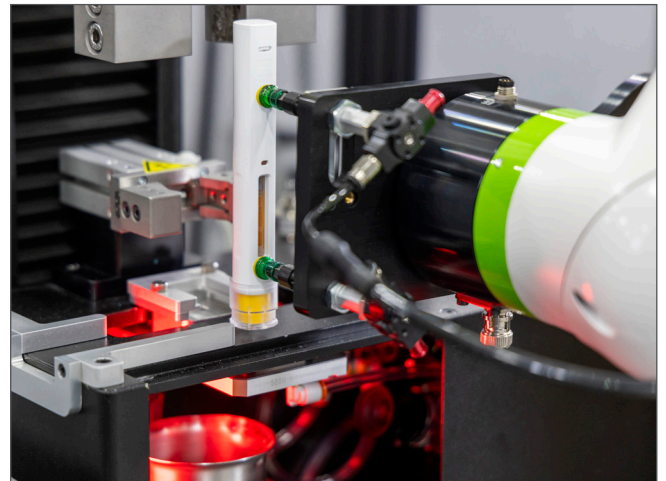


## FEATURES AND BENEFITS

- **Lab Efficiency:** The system acts independently to load specimens, automatically start testing, and unload specimens after test completion. After setting up and starting the testing, the technician or engineer is free to perform other value add tasks while the system processes the specimens.
- **Safety & Ergonomics:** Since the operator is not required to load and unload specimens into the frame, repetitive motions are greatly reduced and user ergonomics are improved.
- **Flexibility:** The CT6 is designed for user driven modifications, meaning that testing new materials or specimen sizes can be automated with minimum time required for the initial setup. Reconfiguring the CT6 for a new test setup can be handled with little to no support from Instron, increasing the autonomy of your lab. New racks and fixture design can be handled entirely by your own internal team or by the custom engineering group at Instron.
- **Software Integration:** The CT6 is fully integrated with Bluehill® Automation and Bluehill Universal, ensuring reliable communication between the cobot and the test system, along with seamless data transfer across software platforms. Optional two-way LIMS integration further extends connectivity, enabling the CT6 to fit smoothly within existing laboratory data workflows and quality systems.
- **Data Reliability:** During component testing, operator variability can be a significant source of error, arising from both manual data entry and inconsistencies in the testing process. Implementing barcode scanning enables automatic transfer of specimen and sample information, effectively eliminating errors associated with manual input. Additionally, automated loading systems ensure consistent and precise device orientation for every test, minimizing the risk of uneven loading or incorrect device placement.

## SPECIFICATIONS

Payload	kg	5
	lbs	11
Reach	mm	994
	in	39.4
Collaborative Mode Speed	mm/sec	1000
	in/sec	39.4
High Speed Mode	mm/sec	2000
	in/sec	78.7
Repeatability	mm	±0.03
Input Power Source	100-120VAC / 200-240VAC	



[www.instron.com](http://www.instron.com)



Worldwide Headquarters  
825 University Ave, Norwood, MA 02062-2643, USA  
Tel: +1 800 564 8378 or +1 781 575 5000

European Headquarters  
Coronation Road, High Wycombe, Bucks HP12 3SY, UK  
Tel: +44 1494 464646